

# M/V SUPERIOR GALE

## Marine Division Liftboat Specifications



# Class 245

Official No.: 1124970

Year Built: 2002

Call Sign: WDA 8730

- 245' Legs
- 6,550 Square Feet of Total Deck Area
- 1,000,000 Lbs. Maximum Deckload
- Works In Water Depths Up To 180'
- Sleeps 46 Persons, Including a Standard Crew Complement of 10
- Can travel with 36 Passengers

Gross Tons: 173 ITC: 1303

Net Tons: 126 390

- USCG Inspected
- ABS Classed
- SOLAS Classed
- SOLAS Ready
- Moonpool Equipped
- Zero Discharge Capable
- Zero Discharge Ready

## Vessel Characteristics

### Hull Dimensions

Length Overall (ft.)	137.5'
Length (Barge Only) (ft.)	132'
Beam Overall (ft.)	98'
Beam (Barge Only) (ft.)	92'
Hull Depth (ft.)	13'
Design Draft (ft./in.)	12' 0"
Open Deck Area (sq. ft.)	5,135
	65 x 79

### Leg Dimensions

<input checked="" type="checkbox"/> Internally Braced	Number of Legs	3
	Leg Length (ft.)	245'
	Leg Diameter (in.)	72"
	Leg Wall (in.)	1 1/2"
	Leg Tower Height (ft.)	20'
	Triangle:	84 P/S x 107 AFT

### Pad Dimensions

Pad Length (ft.)	40'
Pad Width (ft.)	16'
Pad Depth (ft.)	4'

Comments: Raked at both ends

### Crane Specifications

	Port	Starboard
Make	Nautilus	Nautilus
Model	1400L-95	200BT70/100
Load Rating (tons)	250	30
Boom Type	Lattice	Telescoping
Boom Length (ft.)	100'	100'
Crane Inst. Type	Pedestal	Pedestal

All published load ratings are based upon a 20 ft. radius

### Propulsion

<input type="checkbox"/> Bow Thruster Equipped	
Mains - Make	Caterpillar
Mains - Model	3512
Horsepower	1600
Clutch Make/Reduction	5:1

### Generators

Generator Engine Make	Caterpillar
Generator Engine Model	3412
Generator Output	170 kw
<input checked="" type="checkbox"/> Equipped w/ Aux Genset	Output: 95 kw

### Capacities

Diesel Fuel (gal.)	15,000
Potable Water (gal.)	42,410
<input type="checkbox"/> Watermaker Equipped	

### Electronic Aids & Communications

- Compass
- GPS/DGPS
- Loran
- Radar
- Fathometer
- Loudhailer
- Sattelite Phone
- Cellular Phone
- Private Freq Radiotelephone
- VHF Radio
- Single Sideband Radio
- GMDSS

### Personnel Accommodations Features

Total Sleeping Accommodations	46
VIP Accommodations	2
Crew Accommodations	10
Contractor Accommodations	34

### Other Features

- VIP Office
- Galley & Dining
- TV Lounge
- Laundry Facility
- Air Conditioned/Heated

### Performance Characteristics

Estimated Speed	5.0 mph/ 4.34 knots
Max Separation, Pad to Deck (ft.)	225'
Max Working Water Depth (ft.)	180'
Min Working Water Depth (ft.)	13'
Max Jacking	Soft Bottom 5'
Sea States (ft.)	Hard Bottom 4'

# M/V SUPERIOR GALE

## LOAD CHART



**Class  
245**

### MODEL -Nautilus 1400L-95 Marine Crane

**CRANE**

#### PORT CRANE

RADIUS IN FEET	MAIN HOIST										INTERMEDIATE HOIST		AUXILIARY HOIST		
	STATIC RATING					DYNAMIC RATING					STATIC RATING	DYNAMIC RATING	STATIC RATING	DYNAMIC RATING	PERSONNEL RATING
	12 PART	10 PART	8 PART	6 PART	4 PART	12 PART	10 PART	8 PART	6 PART	4 PART					
20	500,000	422,562	343,082	256,984	168,856	330,893	330,893	330,893	256,984	168,856	40,000	26,667	10,207	9,333	3,397
25	404,992	404,992	343,082	256,984	168,856	267,528	267,528	267,528	256,984	168,856	40,000	26,667	10,207	9,333	3,397
30	338,863	338,863	338,863	256,984	168,856	223,442	223,442	223,442	223,442	168,856	40,000	26,667	10,207	9,333	3,397
35	290,380	290,380	290,380	256,984	168,856	192,120	192,120	192,120	192,120	168,856	40,000	26,667	10,207	9,333	3,397
40	253,309	253,309	253,309	253,309	168,856	166,406	166,406	166,406	166,406	168,856	40,000	26,667	10,207	9,333	3,397
45	224,042	224,042	224,042	224,042	168,856	146,895	146,895	146,895	146,895	146,895	40,000	26,667	10,207	9,333	3,397
50	200,346	200,346	200,346	200,346	168,856	131,097	131,097	131,097	131,097	131,097	40,000	26,667	10,207	9,333	3,397
55	180,767	180,767	180,767	180,767	168,856	118,045	118,045	118,045	118,045	118,045	40,000	26,667	10,207	9,333	3,397
60	164,316	164,316	164,316	164,316	168,856	107,077	107,077	107,077	107,077	107,077	40,000	26,667	10,207	9,333	3,397
65	150,296	150,296	150,296	150,296	150,296	97,731	97,731	97,731	97,731	97,731	40,000	26,667	10,207	9,333	3,397
70	138,204	138,204	138,204	138,204	138,204	89,669	89,669	89,669	89,669	89,669	40,000	26,667	10,207	9,333	3,397
75	127,666	127,666	127,666	127,666	127,666	82,644	82,644	82,644	82,644	82,644	40,000	26,667	10,207	9,333	3,397
80	118,398	118,398	118,398	118,398	118,398	76,465	76,465	76,465	76,465	76,465	40,000	26,667	10,207	9,333	3,397
83	110,181	110,181	110,181	110,181	110,181	70,987	70,987	70,987	70,987	70,987	40,000	26,667	10,207	9,333	3,397
90	102,841	102,841	102,841	102,841	102,841	66,094	66,094	66,094	66,094	66,094	40,000	26,667	10,207	9,333	3,397
95	96,240	96,240	96,240	96,240	96,240	61,693	61,693	61,693	61,693	61,693	40,000	26,667	10,207	9,333	3,397
100	86,041	86,041	86,041	86,041	86,041	54,894	54,894	54,894	54,894	54,894	40,000	26,667	10,207	9,333	3,397
102	70,834	70,834	70,834	70,834	70,834	44,756	44,756	44,756	44,756	44,756	40,000	26,667	10,207	9,333	3,397

### IMPORTANT

1. MAIN HOIST CAPACITIES ARE BASED ON 1 1/4" DIAMETER DYFORM 34 HSLR WIRE ROPE. (BREAKING STRENGTH = 220,320 LBS.) 2850 FT. WIRE ROPE IS REQUIRED.
1. INTERMEDIATE HOIST CAPACITIES ARE BASED ON FOUR PART REEVING OF 3/4" DIAMETER, DYFORM 18 HSLR WIRE ROPE (BREAKING STRENGTH = 64,800 LBS.) 1085 FT. OF WIRE ROPE IS REQUIRED.
3. AUXILIARY HOIST CAPACITIES ARE BASED ON ONE PART REEVING OF 3/4" DIAMETER, DYFORM 18 HSLR WIRE ROPE (BREAKING STRENGTH 64,800 LBS.) 450 FT. OF WIRE ROPE IS REQUIRED.
4. ALL RATINGS IN ACCORDANCE WITH API SPECIFICATION 20 (SPEC 2C), FIFTH EDITION, APRIL 3, 1995.
5. THE ABOVE RATINGS ARE CONSIDERED NET RATINGS AS THE MAIN LOAD BLOCK WEIGHT OF 7400 LBS. INTERMEDIATE LOAD BLOCK WEIGHT OF 785 LBS., AND AUXILIARY LOAD BLOCK WEIGHT OF 210 LBS. HAVE BEEN SUBTRACTED.
6. DYNAMINC RATINGS ARE BASED ON A DYNAMIC COEFFICIENT OF 2.0

### STBD CRANE

**CRANE**

#### RETRACTED 70 FT. MAX REACH

RADIUS IN FEET	ANGLE DEGREES	6-PART MAIN		AUXILIARY LIFTS		
		STATIC	DYNAMIC	STATIC	DYNAMIC	PERSONNEL
9	82.6	60,000	40,000			
10	82	60,000	40,000			
15	78	60,000	40,000			
20	74	60,000	40,000			
25	69	60,000	40,000			
30	65	60,000	40,000			
35	61	53,271	35,081			
40	56	45,862	30,141			
45	51	40,150	26,333	5,040	5,040	5,040
50	45	35,611	23,307			
55	39	31,917	20,845			
60	32	28,851	18,801			
65	23	26,263	17,075			
70	0	17,869	11,479			

#### EXTENDED 100 FT. MAX REACH

RADIUS IN FEET	ANGLE DEGREES	6-PART MAIN		AUXILIARY LIFTS		
		STATIC	DYNAMIC	STATIC	DYNAMIC	PERSONNEL
12.8	82.5	19,036	12,257			
15	81	18,726	12,051			
20	79	18,239	11,725			
25	76	17,458	11,205			
30	73	16,930	10,853			
35	70	16,457	10,538			
40	67	16,056	10,271			
45	64	15,717	10,045			
50	60	15,432	9,855			
55	57	15,215	9,710			
60	54	15,072	9,615			
65	50	14,993	9,562			
70	46	15,003	9,569	5,040	5,040	1,840
75	42	15,108	9,639			
80	38	15,324	9,783			
85	33	15,753	10,069			
90	27	16,486	10,557			
95	19	15,286	9,757			
100	0	9,450	5,867			

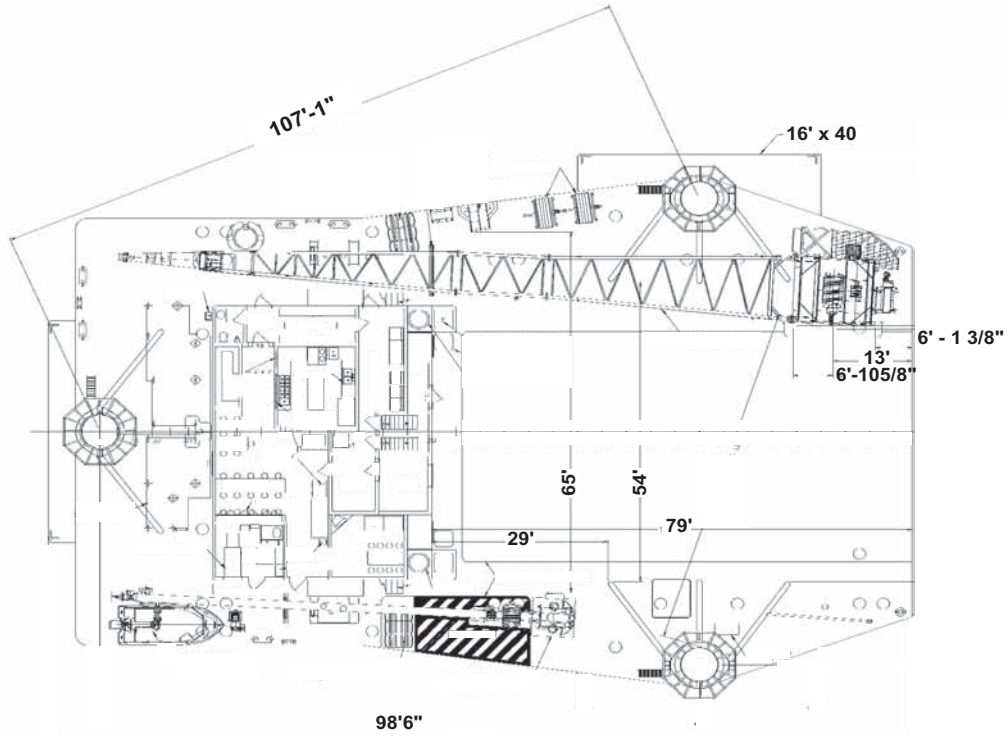
NOTES: Main Hoist capacities are based on a six part reeving of 3/4" Diameter, Dyform 18 HSLR Wire Rope (BREAKING STRENGTH = 64,800 LBS.) 1,547 FT. of Wire Rope is Required.  
 • Auxiliary Hoist Capacities are based on one part reeving of 1/2" Diameter Dyform 18 HSLR. Wire Rope (BREAKING STRENGTH - 29,200 LBS.) 383 FT of Wire Rope is required.  
 • All ratings in accordance with API Specification 20 (Spec. 20). Fifth Edition, April 3, 1995  
 • The above ratings are considered net ratings as the main load block weight of 1,300 LBS. & the overhaul ball weight of 321 LBS has already been deducted.

# M/V SUPERIOR GALE

## LIFTBOAT SPECIFICATIONS



Class  
**245**



MAIN DECK PLAN

